

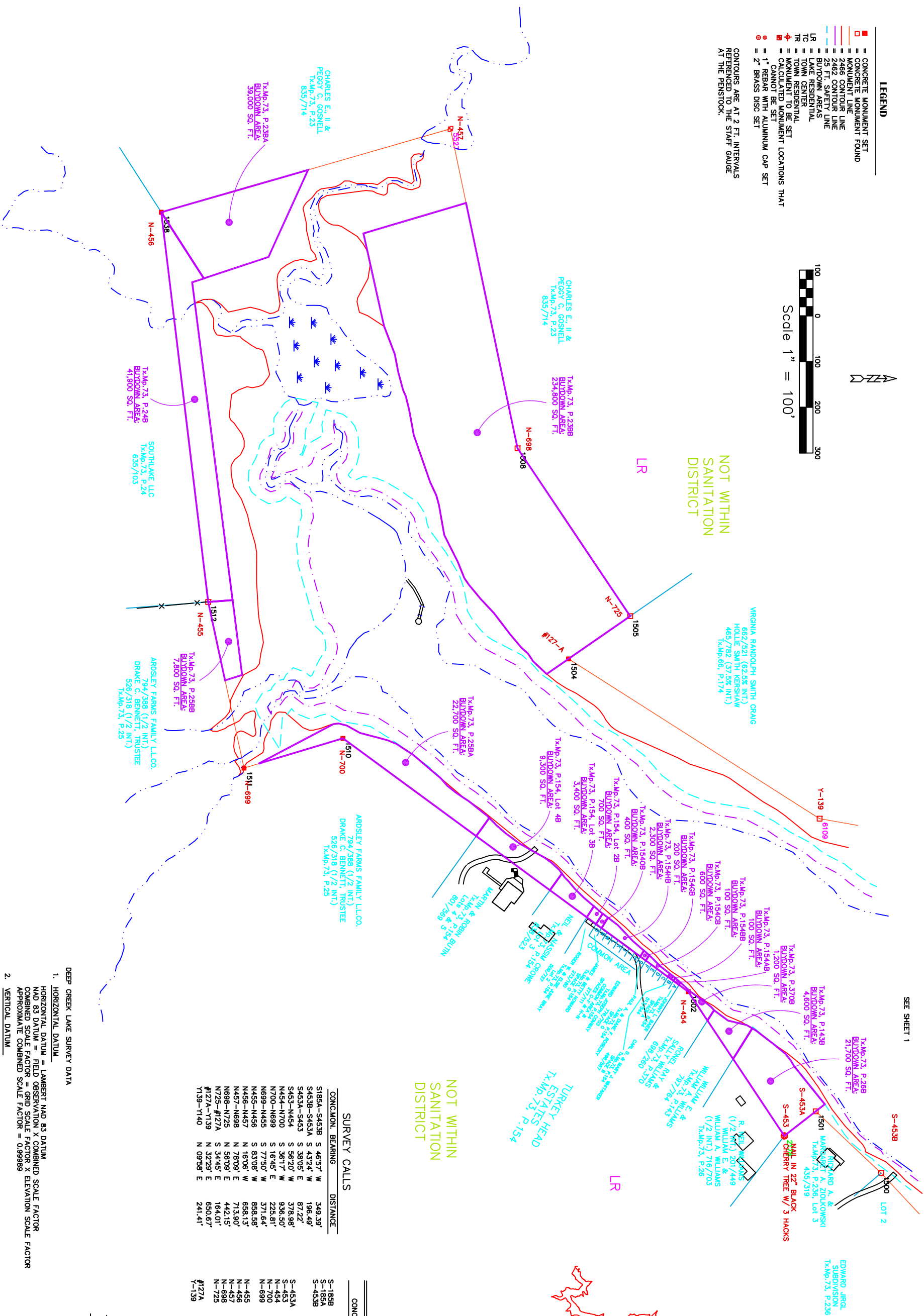
LEGEND

- CONCRETE MONUMENT SET
- CONCRETE MONUMENT FOUND
- MONUMENT LINE
- 2466 CONTOUR LINE
- 2462 CONTOUR LINE
- 25 FT. SAFETY LINE
- LR = BUILDING AREAS
- TR = TOWN RESIDENTIAL
- TC = TOWN COMMERCIAL
- ◆ MONUMENT TO BE SET
- ◆ MONUMENT TO BE SET
- ◆ CANNOT BE SET
- ◆ 1" REBAR WITH ALUMINUM CAP SET
- ◆ 2" BRASS DISC SET

CONTOURS ARE AT 2 FT. INTERVALS REFERENCED TO THE STAFF GAUGE AT THE PENSTOCK.



Scale 1" = 100'



SEE SHEET 1

NOT WITHIN SANITATION DISTRICT

TURKEY HEAD ESTATES P.154

PENELEC CALLS

CONCOMMON NO.	BEARING	DISTANCE
S-1859	S 74° 48' W	244.45 FT.
S-1858	S 44° 08' W	196.75 FT.
S-453A	S 43° 00' W	196.75 FT.

SURVEY CALLS

CONCOMMON	BEARING	DISTANCE
S185A-S453B	S 46°57' W	349.39'
S453B-S453A	S 43°24' W	196.49'
S453A-S453	S 38°05' E	87.22'
S453-N454	S 56°20' E	378.98'
N454-N700	S 36°17' W	936.50'
N700-N699	S 16°45' E	225.81'
N699-N455	S 77°50' W	371.84'
N455-N456	S 83°08' W	898.58'
N456-N457	N 16°06' W	698.13'
N457-N698	N 78°09' E	713.90'
N698-N725	N 56°09' E	442.15'
N725-N127A	S 34°45' E	164.01'
#127A-Y139	N 32°29' E	650.67'
Y139-Y140	N 09°58' E	241.41'

COORDINATE SCHEDULE

Mon.	North	East
S453B	6589091.38	660538.22
S453A	657948.60	660403.23
N454	657669.89	660141.60
#127A	657408.21	659413.69
N725	657342.98	659320.23
N699	657296.70	659303.02
N456	656998.54	659262.14
N455	656690.41	659239.21
N454	656517.77	659436.76
S453	657879.95	660457.04
N457	657150.11	658254.33
Y139	657957.05	659763.18

DESIGNED BY: SUSAN N. EVANS PERAZZO	APPROVED BY: MORGAN C. FRANCE	REVISIONS	DATE
DRG: DEPCHK2	PROJ. NO.	7/11/00	
123\CDATA\EP\PROJECTS\DC12000\DEPCHK2	Plot date: 7/05/00 at 2:25	10/17/01	
		5/08/02	
DEPT. OF GEN. SERVICES - REAL ESTATE	DEPT. OF MARYLAND	300 West Preston Street, Room 601 Baltimore, Maryland 21201	
MORGAN C. FRANCE, L.S., P.E.	10 North Third Street	Oakland, Maryland 21550	
(301) 334-2305			
DEEP CREEK PROJECT	DRAWING 2, DEEP CREEK COVE	SHEET NO. 2	

© COPYRIGHT - 2000 BY MORGAN C. FRANCE, L.S., P.E.
ALL RIGHTS RESERVED